

04-2013

**Mgx** memory charger



## AUTOMATIC BATTERY CHARGERS

# MGX MEMORY CHARGER

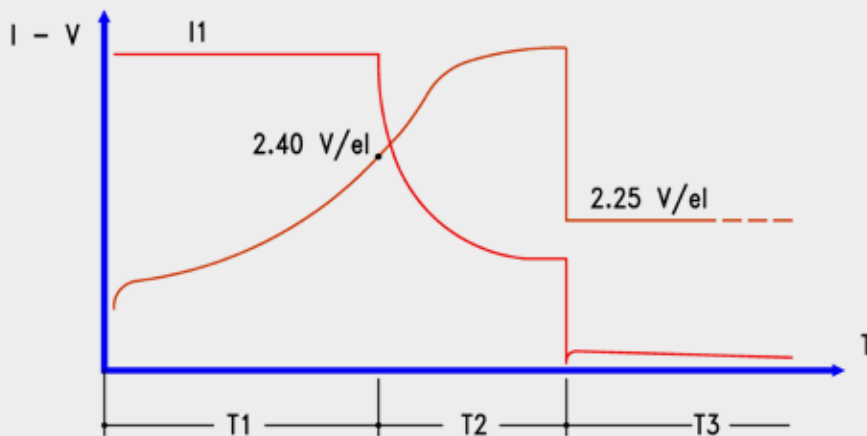


## Automatic battery chargers

- **STABILIZED:**  
correct charge level even with wide supply voltage fluctuations (min. 185V - max 265V)
- **TRADITIONAL:**  
the MGX series belongs to a traditional manufacturing choice (not high frequency).
- **SIMPLE:**  
the charging cycle starts automatically, simply connecting the battery. The microprocessor estimates the discharge level and the correspondent charging duration
- **DATA MEMORY:**  
it reduces warranty costs, as it controls how the operator works
- **FLEXIBLE:**  
it charges both lead acid and gel batteries (programmable)
- **RELIABLE:**  
3 years' warranty
- **OUTPUT VOLTAGE:**  
12V, 24V, 36V, 48V.
- **RECHARGEABLE CAPACITY:**  
from 30 Ah/C<sub>5</sub> to 480 Ah/C<sub>5</sub>
- The rated output current is CONSTANT CURRENT.
- The manufacturer ensures the recharge of the capacities indicated below within 10/1 hours with 80% discharged battery. Less deep discharges require lower recharge times.
- The programming of these devices allows to charge any battery brand.
- The devices are supplied with the mains cable with a Schuko plug.
- The units are supplied with their output cables, but without battery connector.
- The battery connectors are available on request.
- Dimensions:  
length 05 x depth 160 x height 127 mm  
length 85 x depth 200 x height 147 mm

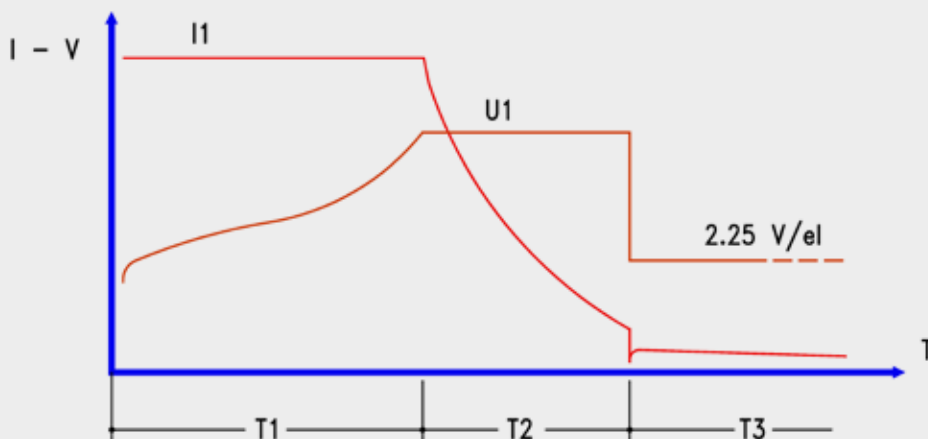
### PROGRAMMABLE CHARGE CYCLES

#### Charge Cycle for LEAD-ACID batteries: I<sub>W</sub>a + Holding



T1 = max. 13 hrs  
T2 = 0,6 T1 (min 1 --- max 4 hrs)  
T3 = unlimited

#### Charge Cycle for GEL batteries: U<sub>1</sub> + Holding



T1 = max. 12 hrs  
T2 = T1 (min 2 --- max 5 hrs)  
T3 = unlimited  
U<sub>1</sub> = set value (parameter 2)

## Battery charger programmer MP TOP II

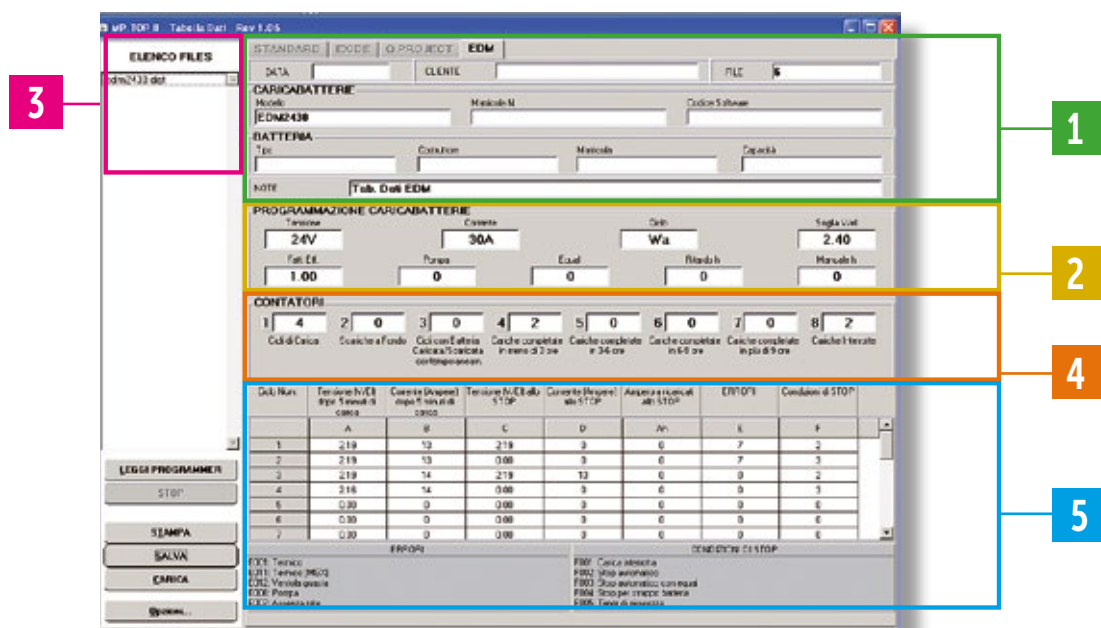
This high-tech device, recommended to distributors and after sales service centers, is necessary to set up and to download the data memory of POWER-SWITCH chargers. The KIT includes the programmer, cables to connect it to the charger and to the PC. The SW to be installed on your PC is also supplied.

The normal operation is guaranteed by the internal lithium battery, thus no other power source is necessary. The battery is completely recharged by leaving the programmer connected to the USB port of your PC.

The equipped SW can be up-dated through internet and it can be set in different languages:

I, D, E, F, UK, NL

Code: **MPTOPII**



**1** General information connected to the collected data (date, customer name, battery-type, capacity and so on).

**2** Information about the charger setting

**3** Chargers serial numbers, where information were downloaded from

Counters referred to the whole battery life:

- Counter 1: total number of charge cycles (included those ones interrupted by the operator)
- Counter 2: how many times the battery was discharged till the lowest possible value (it works only in case the charger is fitted on-board)
- Counter 3: how many times the battery is simultaneously charged and discharged. Important information because such kind of use damages the battery
- Counters 4, 5, 6, 7: all the charge cycles automatically completed split into 4 groups in relation to their duration.
- We clearly understand the average depth of discharge (i.e.: long recharge means deep discharge)
- Counter 8: how many times the user interrupted the charge cycle before the automatic stop

Detailed information over the last month of charge cycles

- Battery voltage and output current of the charger at the beginning of the charge
- Battery voltage and output current of the charger at the end of the charge
- Ah supplied to the battery during the charging process
- Errors happened during the charging process
- Stop conditions
- All these information are useful to detect user behaviour, but also battery and charger operating.





**BATTERY CHARGER  
INDUSTRY**

Via Pietro Nenni, 17/19  
Colombare di Sirmione - Brescia - ITALY  
Tel. +39 030 9906010  
[mori@moriraddrizzatori.it](mailto:mori@moriraddrizzatori.it)  
[www.moriraddrizzatori.it](http://www.moriraddrizzatori.it)